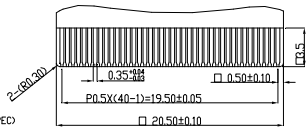
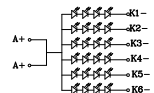
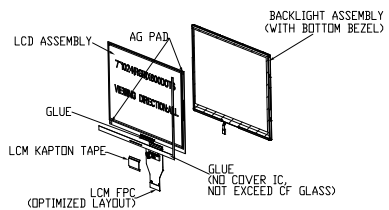
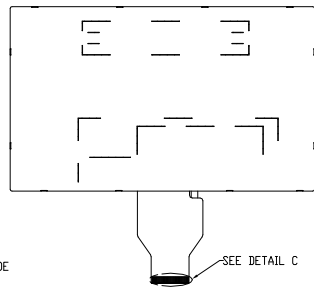
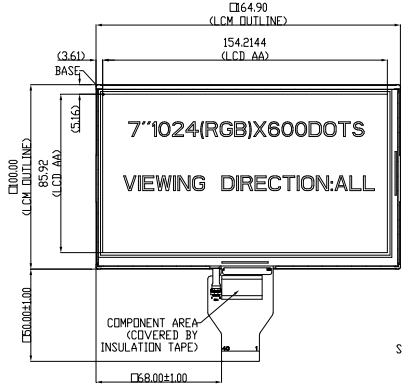
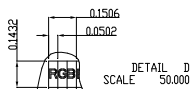


TFT PRODUCT SPECIFICATIONS	1024RGB x 600	16.7M Colors	7.0" Diagonal
Part Number	SVT-070WXLCTIPC01AF-02		
Overall Dimensions	216 (H) x 120.45(V) x 4.9(T)		
Active Area	154.2144(H) x 85.92(V)		
Resolution	1024 RGB (H) x 600 (V)		
Pixel Size	0.1506 (H) x 0.1432(V) mm		
Display Colors	16.7M		
Display Mode	IPS/Transmissive /Normally Black		
LCD Type	a-Si TFT		
Contrast Ratio	800:1 (Typ)		
Viewing Angles (CR≥10)	85°/85°/85°/85° (Left/Right/Top/Bottom)		
View Direction	Viewing angle free		
Brightness (I=120mA)	300cd/m ² (TYP.)		
NTSC	50%		
Driver IC	EK79001HE (Source&TCON)+ EK73215BCGA (Gate)		
AVDD	9.6V		
VDD	3.3V		
VGH	18V		
VGL	-6.0V		
VCOM	3.2V(VCOM should be adjusted to make the flicker level be minimum.)		
Interface	8bits LVDS		
Backlight System	24 White LED,4 in series,6 in Parallel		
Forward Voltage	12.4V(typ)		
Forward Current	120mA (typ)		

The information contained herein is based upon typical data, Senvita Technology makes no warranties expressed or implied as to its accuracy and assumes no liability arising out of its use by others.

- ⊠---CRITICAL DIMENSION MUST MEET THE REQUIREMENT OF Cpk CONTROL, Cpk>1.33.
- IMPORTANT CONTROL DIMENSION MUST MEET A TOLERANCE.
- ()---DIMENSIONS IN PARENTHESES () ARE FOR REFERENCE, THEREFORE TOLERANCE IS NOT APPLIED TO THE DIMENSIONS IN PARENTHESES.
- ★---SPECIAL CHARACTERISTICS.

REV	ECN NO.	NATURE OF MODIFICATION	CHANGED BY:	DATE
△				



- NOTE:
1. DISPLAY TYPE:7.0" TFT 1024(RGB)X600 TRANSMISSIVE, NORMALLY BLACK
 2. HUMAN EYE VIEWING DIRECTION: ALL
 3. BACKLIGHT:24 pcs WHITE LEDs
 4. OPERATING TEMP:-20 °C~70 °C
 5. STORAGE TEMP:-30 °C~70 °C
 6. CUSTOMER PROJECT NAME: NO SPECIFIED
 7. CUSTOMER PART NO: NO SPECIFIED
 8. TUFFY GLUE CAN NOT EXCEED TOP GLASS SURFACE AND IC TOP SURFACE
 9. IT SHOULD COVER ITD FULLY ,IC BOTTOM AND THE BONDING AREA OF FPC AND LCD.
 10. 3M GLUE DP190 TO BE ADDED BETWEEN FPC AND THE EDGE OF LCD OR SENSOR (WIDTH:5mm MAX).
 - 10USE LOW IRON CHEMICALLY STRENGTHENED GLASS FOR COVER LENS.
 - 11.ALL PARTS MUST BE ROHS COMPLIANCE.

PIN OUT OF LCM FPC									
1	VCCM	11	RX1M-	21	RX3M+	31	LEB_AH		
2	VDD	12	RX1M+	22	GND	32	LEB_AH		
3	LEB_RESET	13	GND	23	NC	33	GND		
4	VGH	14	RX2M-	24	GND	34	LEB_K1		
5	VGL	15	RX2M+	25	NC	35	LEB_K2		
6	AVDD	16	GND	26	LEB_SDA	36	LEB_K3		
7	GND	17	RX1M_GND	27	NC	37	LEB_K4		
8	RX1M-	18	RX1M_GND	28	NC	38	LEB_K5		
9	RX1M+	19	GND	29	NC	39	LEB_K6		
10	GND	20	RX1M+	30	NC	40	GND		

UNIT: mm	GENERAL TOLERANCE: X.X = ± 0.3 X.XX = ± 0.20 ANGLE = ± 0.5°			PART NO.: SVT-070WXLC1PC01AF-02
3RD ANGLE	NOT IN SCALE	NAME		
DRAFTED BY:	CHECKED BY:	APPROVED BY:	TITLE:	DRAWING NO.:
				REV: 01 SH NO.:1/1