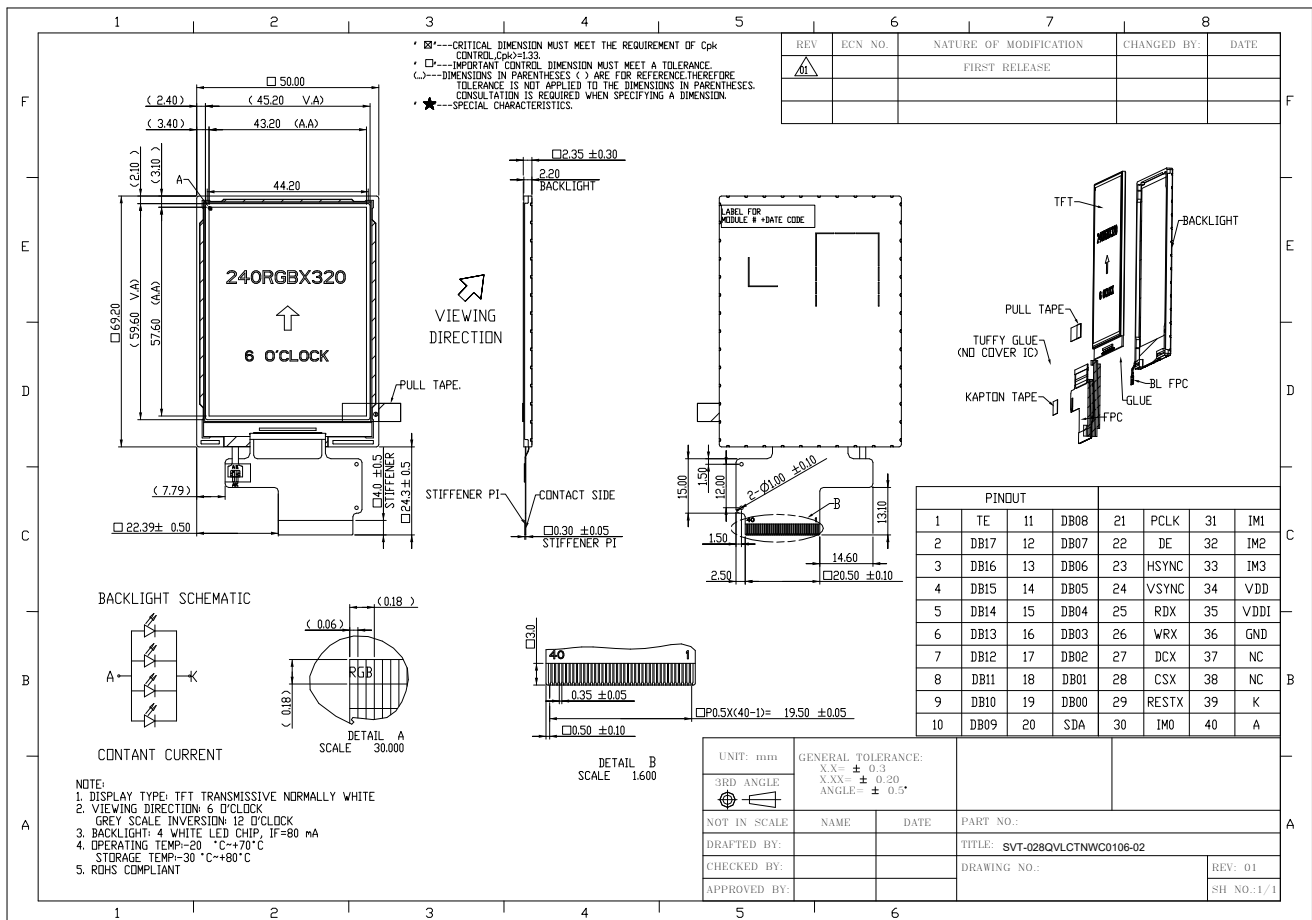


Part Number	SVT-028QVLCTNWC0106-02
Overall Dimensions	50.00(H) x 69.20 (V) x 2.35(T)
Active Area	43.2(H) x57.60(V)
Resolution	240 RGB(H) x320(V) Stripe
Pixel Size	0.18(H) x0.18(V)mm
Display Colors	262K
Display Mode	TN, Normally White, Transmissive
LCD Type	a-Si TFT
Contrast Ratio	500:1 (typ)
Viewing Angles (CR≥10)	45°/45°/50°/20°(Left/Right/Top/Bottom)
View Direction	6 o'clock
Brightness (I <sub>f</sub> =20mA)	300 cd/m <sup>2</sup> (typ)
NTSC	TBD
Driver IC	ST7789V2 or equivalent
VDD ( Power Supply)	3.1~3.5V
VDDI(I/O logic Voltage)	1.65~3.3V
Interface	18-bit Parallel CPU/RGB interface/SPI
Backlight System	4 White LEDs in parallel
Forward Voltage	3.2V (typ)
Forward Current	80 mA (typ)



The information contained herein is based upon typical data, Senvita makes no warranties expressed or implied as to its accuracy and assumes no liability arising out of its use by others.